

Chorley
Council

Planning
Committee Meeting

13 June 2023



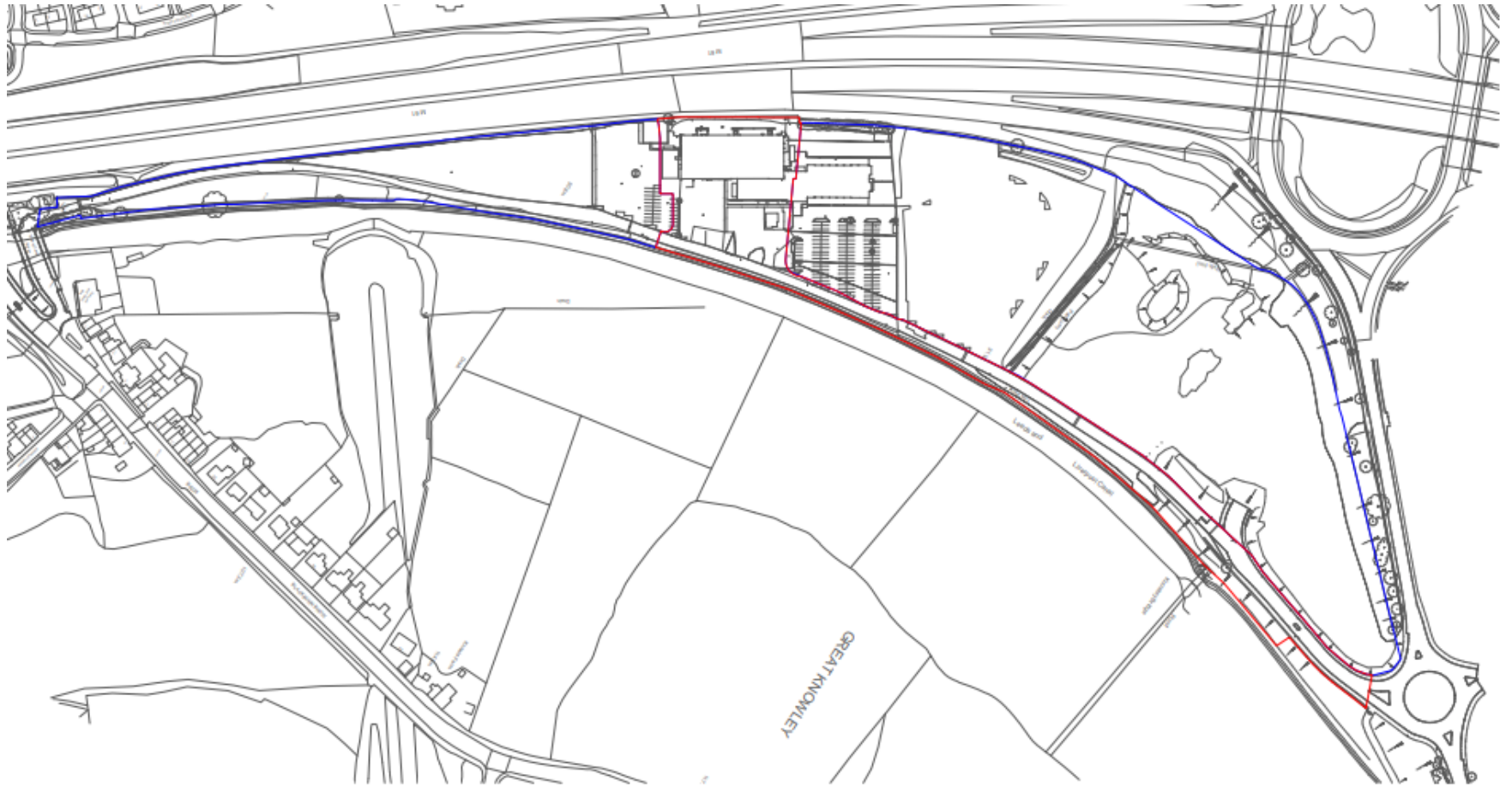
Item 3d

22/01080/FULMAJ

Canal Mill, Botany Bay, Chorley

Erection of podium to provide decked car park (163no. spaces for cars / 9no. for motorcycle / 25no. for cycle), helipad and hangar, multi-purpose sports hall, access and internal circulation, landscaping and ancillary works

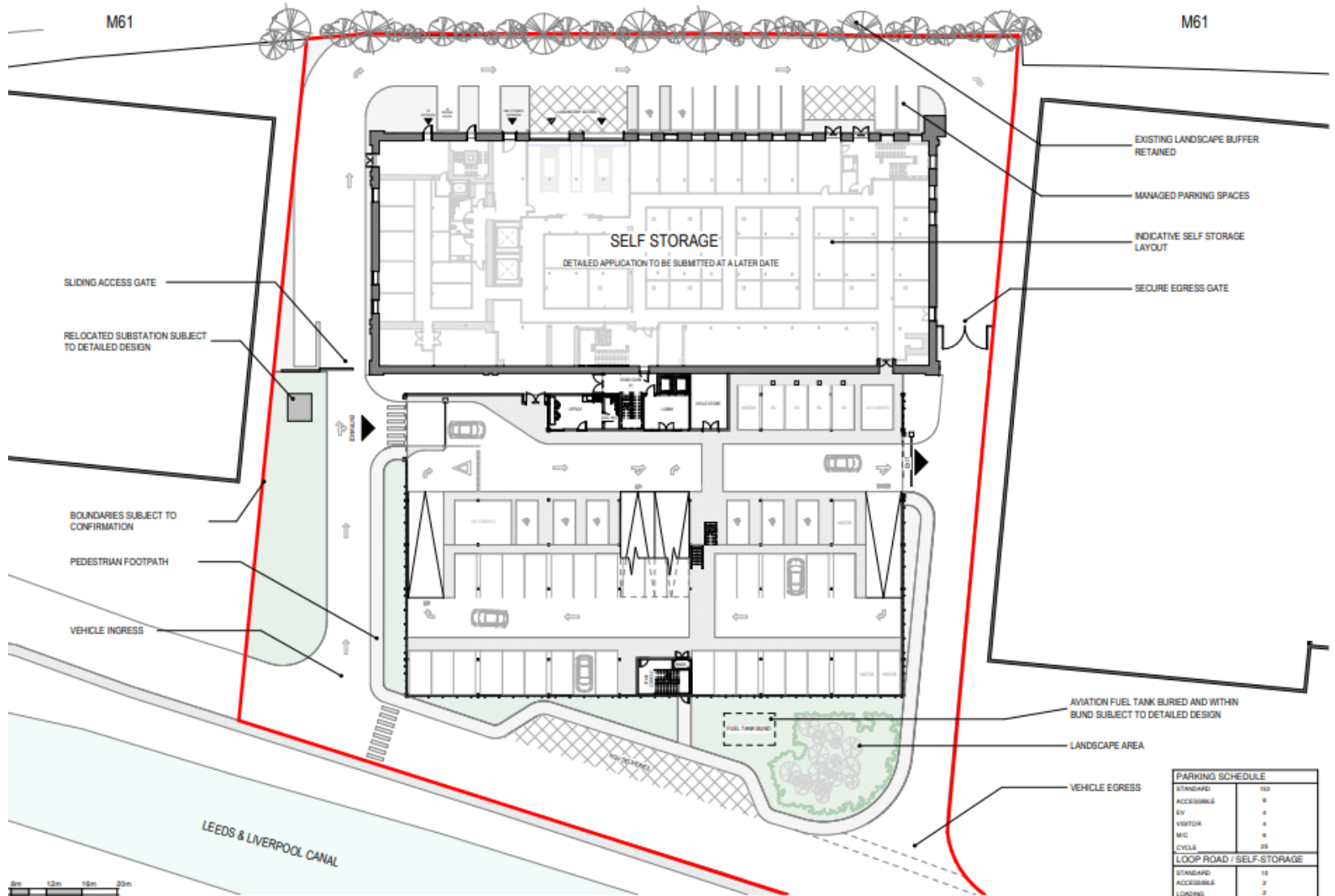
Location Plan



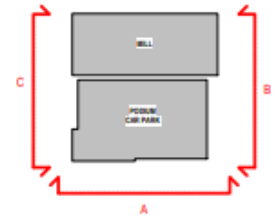
Aerial Photo



Proposed Site Plan



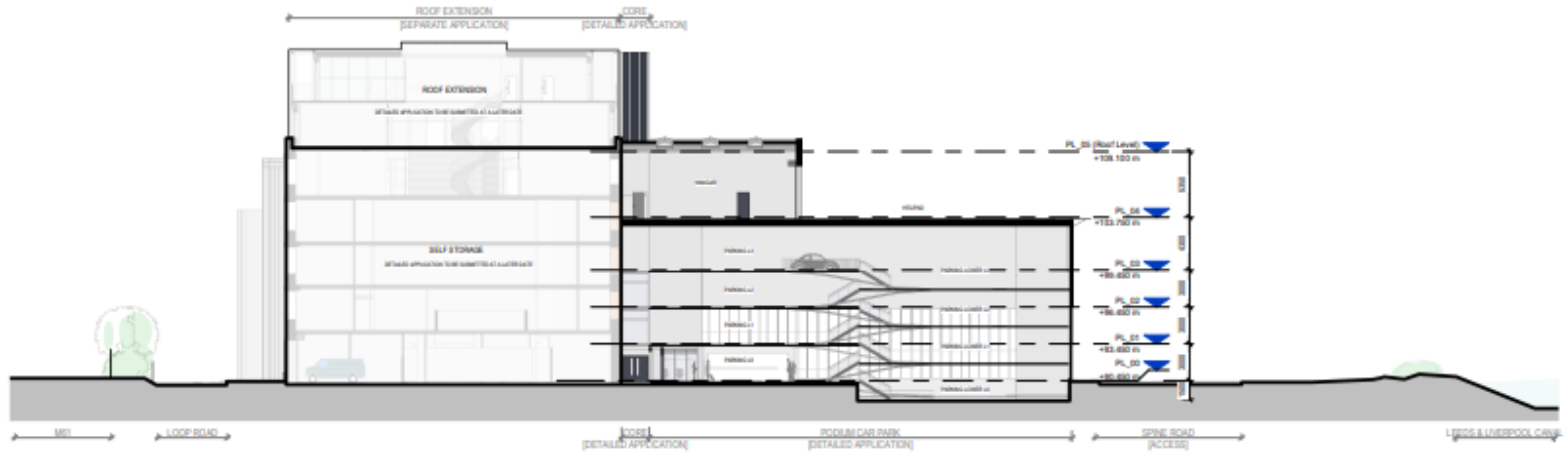
Proposed Elevations



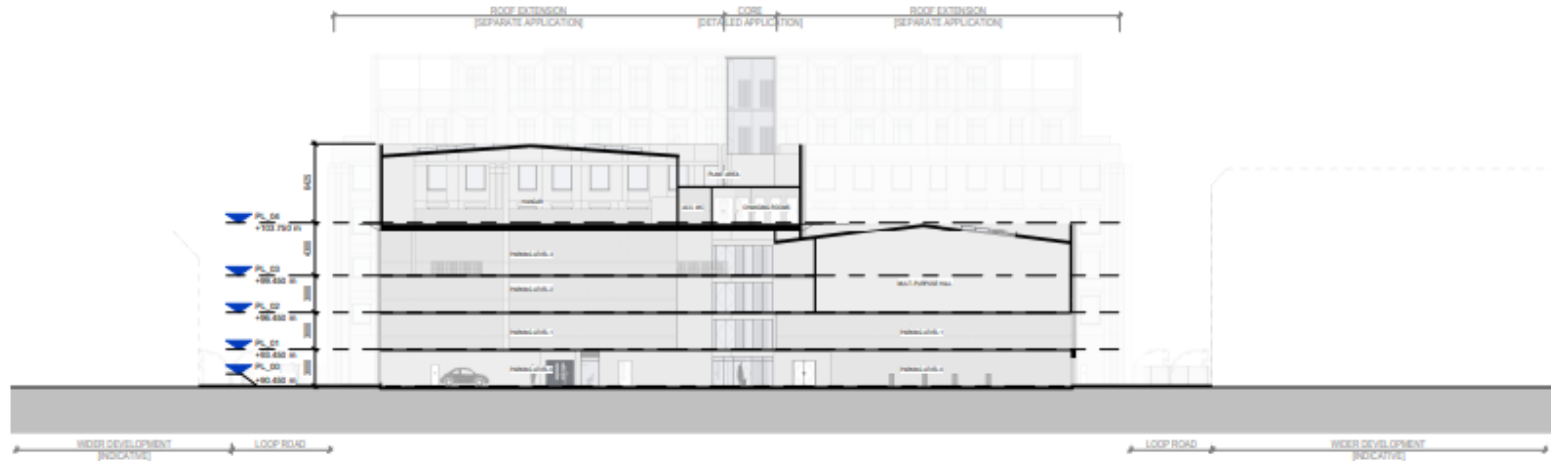
MATERIALS KEY	
1	DARK GREY RAINSCREEN CLADDING
2	DARK GREY CONCRETE SHUTTER
3	RUSTIC VERTICAL FINIS
4	DARK GREY FIRE EXIT DOOR
5	LIGHT GREY STEEL VERTICAL FINIS
6	CONCRETE SLAB
7	GLAZING
8	HELPRID NETTING



Proposed sections

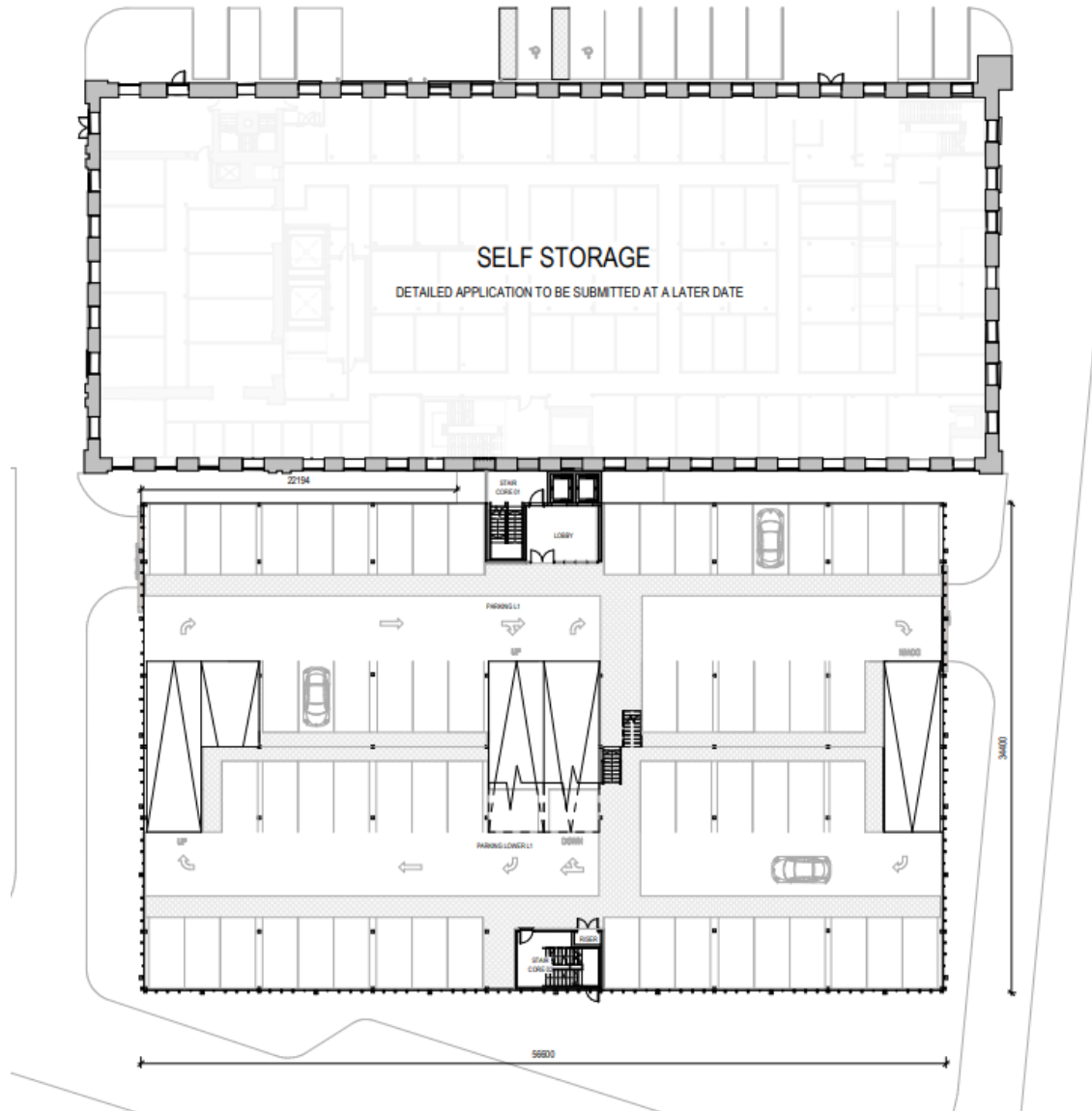


1 Section A-A
1 : 200

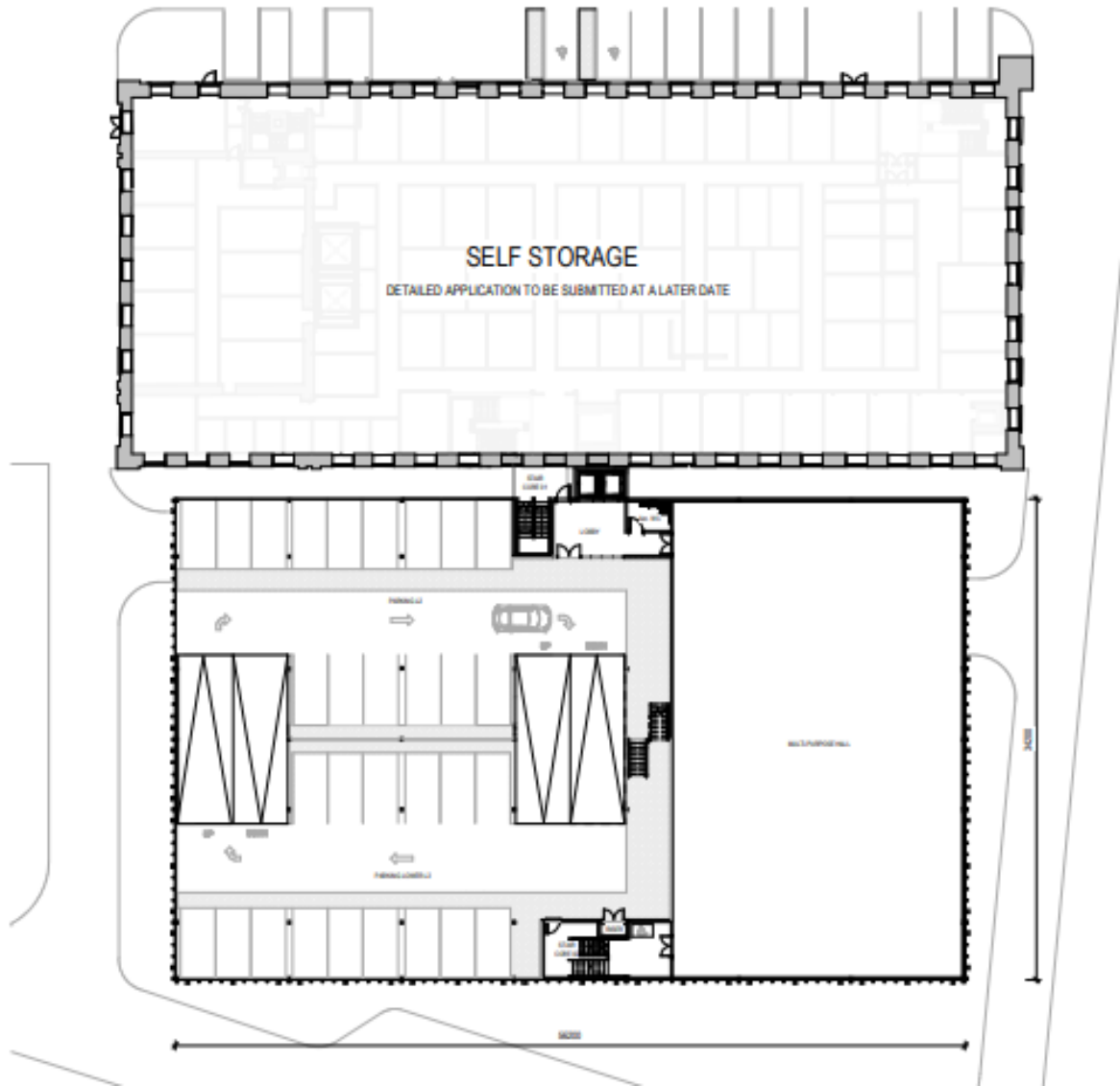


2 Section B-B
1 : 200

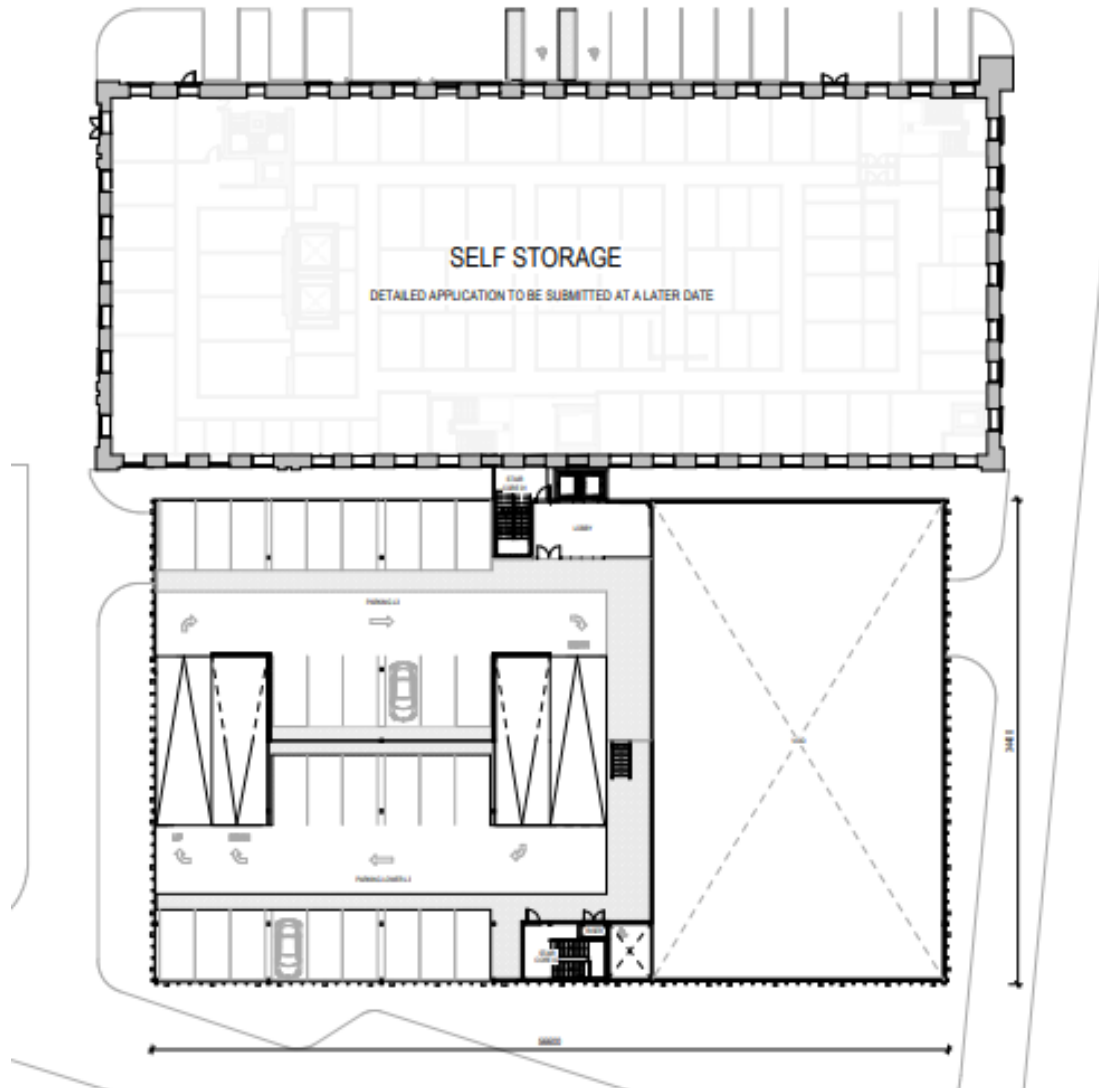
Proposed first floor



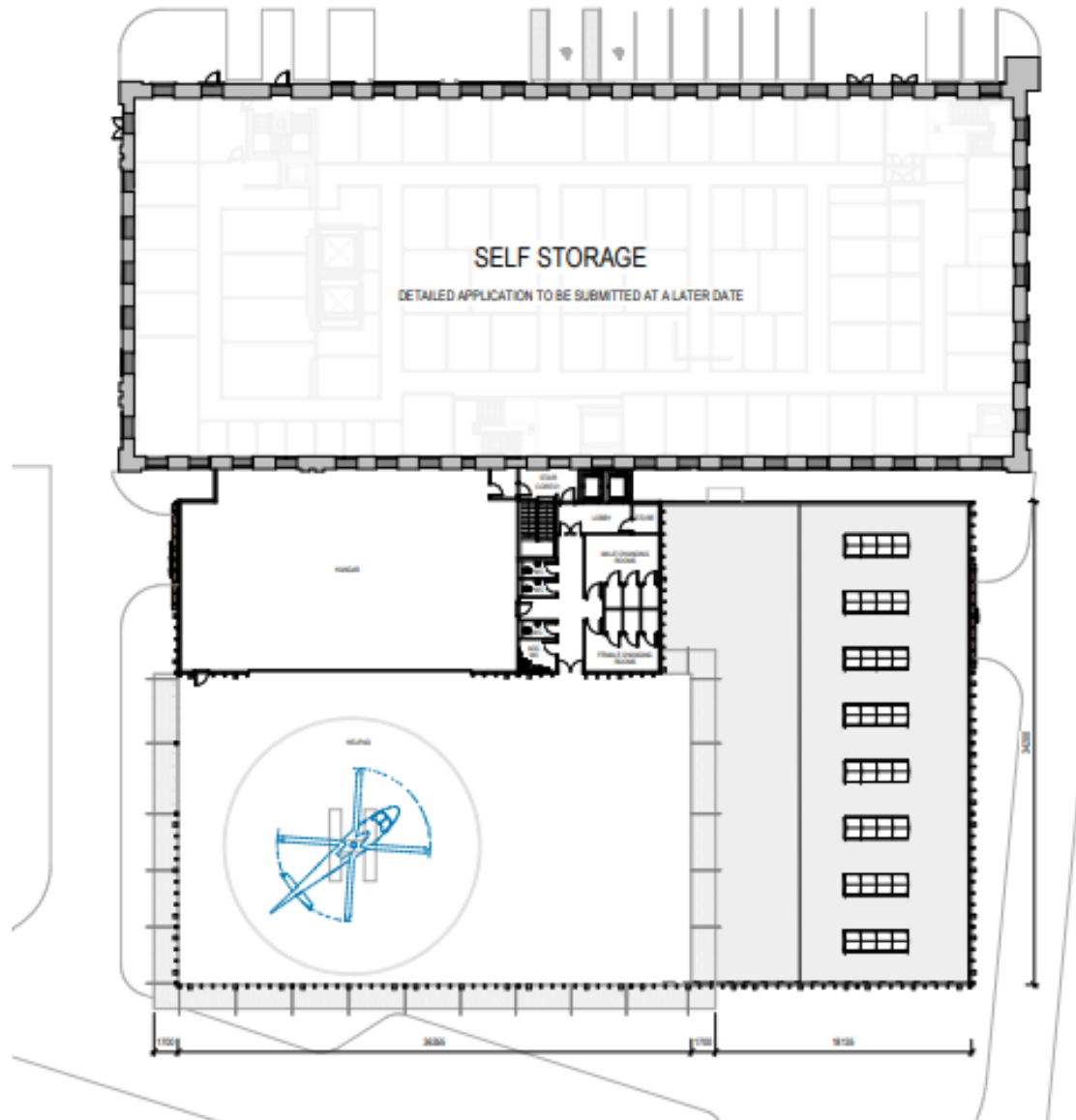
Proposed second floor

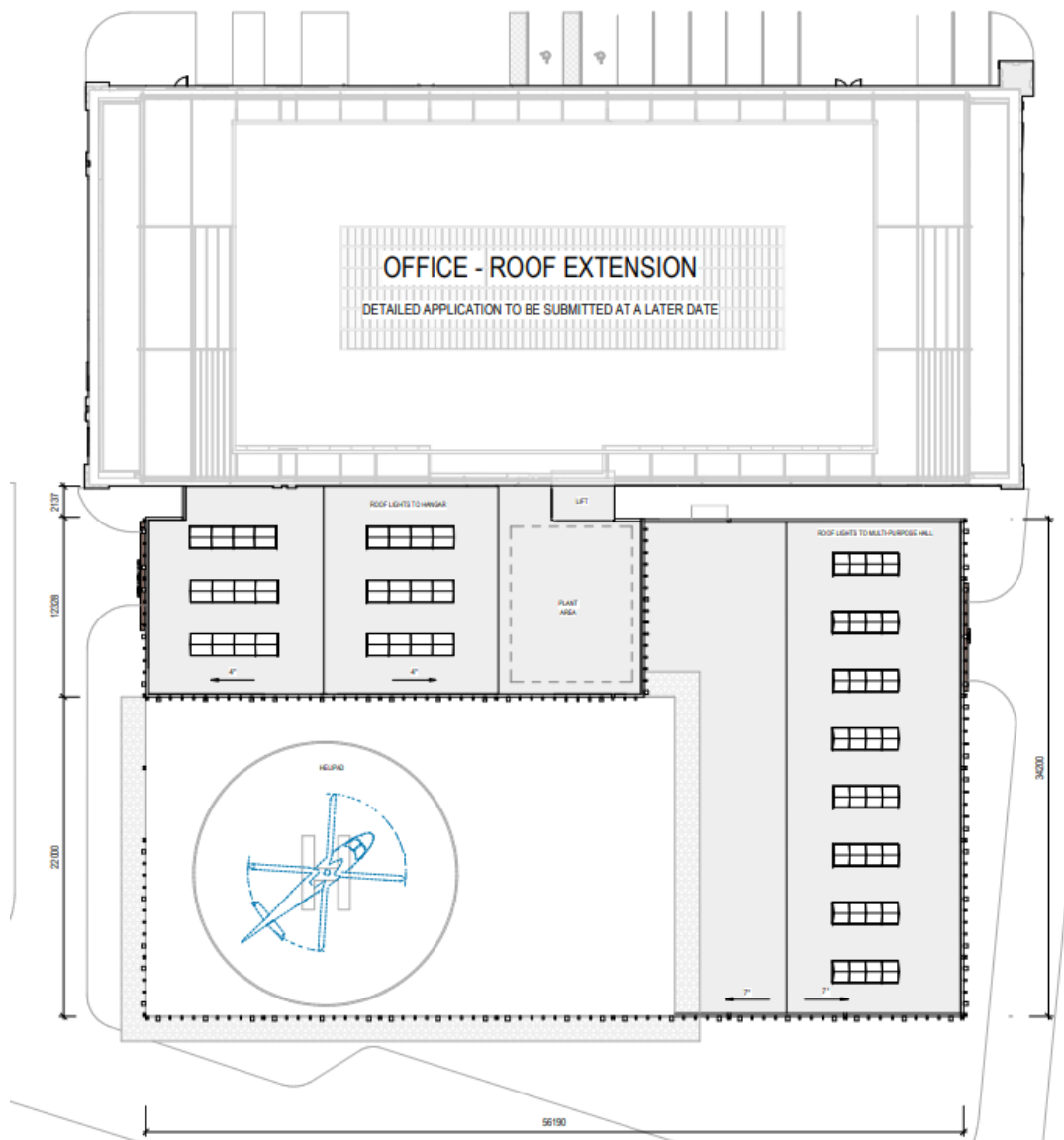


Proposed third floor



Proposed fourth floor





CGI visual



Site photo



Site photo



Hangar and offices

